







Praber was founded in 2001 by will and determination of two young colleagues who already boasted a long experience in the field of manufacture, installation and servicing of presses for brass and metals forging, gained at a well known Italian manufacturer.

They acquire their expertise and consolidate their know-how “on site”, defining and differentiating their areas of specialization very soon, Michele Prandelli in electronics and industrial electrotechnology, while Giuliano Bertolotti in mechanics and process mechanical design, together they become therefore the technical team of technical testers, both in Italy and abroad, deepening by this way their problem-solving skills and the capability of providing the best solution for the product and the cycle as well. They achieve a considerable case history, results and processes expertise giving birth to the ambition to produce a technologically sophisticated press, technologically superior, refined and responsive to all the typical needs of forging companies and all the concrete requirements occurring within the industrial process, thus optimizing the profit as a final consequence.

# PRABER

## Forging the future

### **Manufacturing of pressess is our answer to current market's demand**

Thanks to such essential technical and operational background it is now possible to appreciate the unique value and defining features of Praber: manufacturing of forging and screw presses, whose technical applied solutions are the result of experience, observation within operational practice settings, and data collection of various industrial processes.

Praber offers mastery in terms of craft, which means a guarantee of reliability and quality for all customers, who enjoy the advantage of using machineries enclosing all the knowledge and expertise regarding both the processes and the solutions, meanwhile investing in an ambitious , modern, dynamic and flexible company..

Praber is a young and curious company, also attentive to the needs and trends that customers urge to implement both with regard to machinery and plants, because the added value of our company lies just in his soul as a manufacturer, whose research and innovation is not confined inside a laboratory or in front of a screen, on the contrary it dwells in the forging companies of customers, with whom Praber boasts relationships based on ongoing dialogue, the real challenge for optimization of offered solutions.

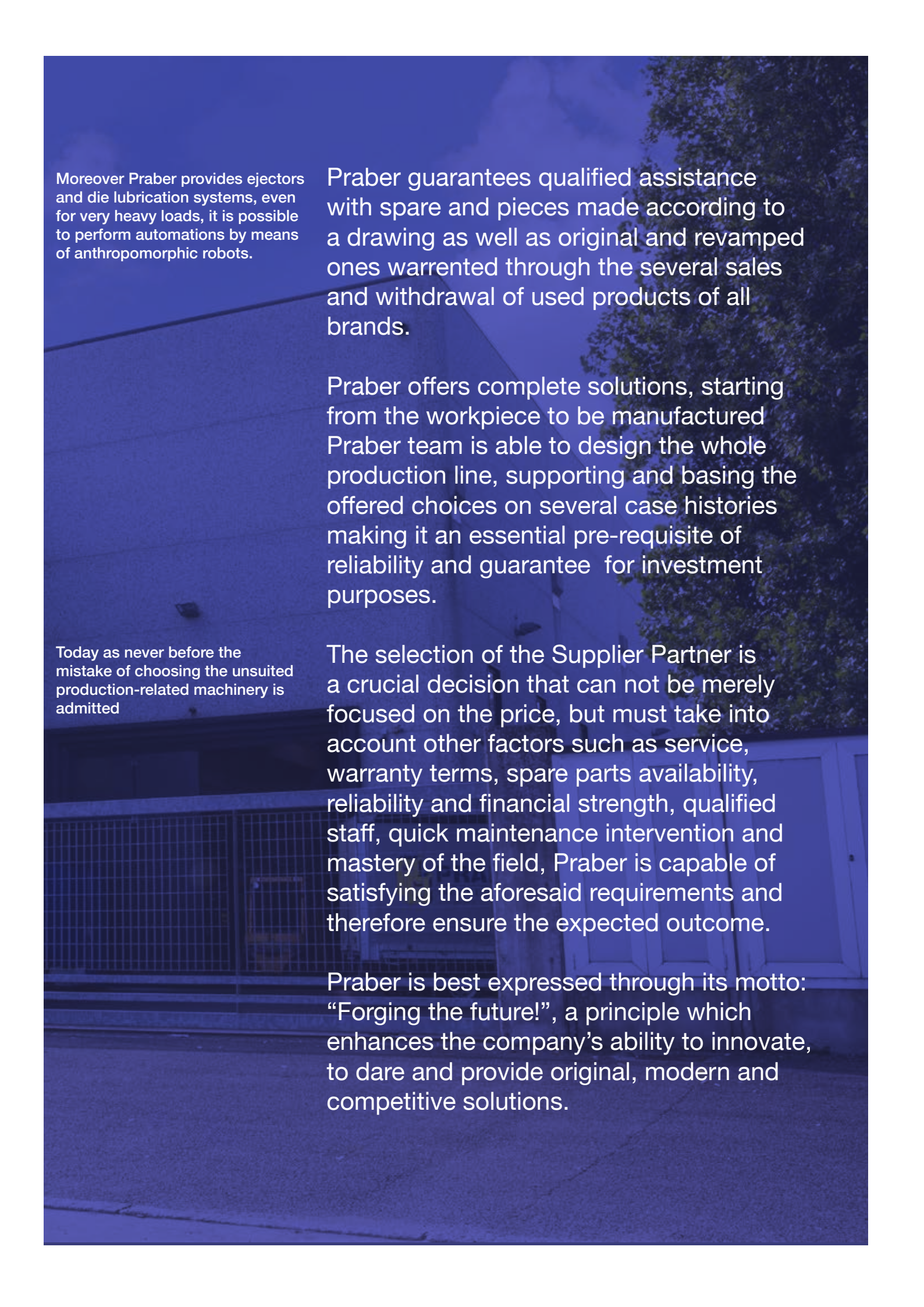
Today Praber is an Italian manufacturer with exclusive brand of forging presses, screw presses and complete plants for metal hot forming (brass, steel and other metal alloys), is also the manufacturer of forging press machinery control panels and automation systems thanks to the acquisition of Atlas Elettrica, which has been acknowledged for a long time now, because of its expertise and specialization in this industry field.

As a further offered service the design of electronic and pneumatic load/unload automation systems equipped with the most advanced technologies, always customized according to the needs and perfectly combinable with any type of machinery.









Moreover Praber provides ejectors and die lubrication systems, even for very heavy loads, it is possible to perform automations by means of anthropomorphic robots.

Praber guarantees qualified assistance with spare and pieces made according to a drawing as well as original and revamped ones warranted through the several sales and withdrawal of used products of all brands.

Praber offers complete solutions, starting from the workpiece to be manufactured Praber team is able to design the whole production line, supporting and basing the offered choices on several case histories making it an essential pre-requisite of reliability and guarantee for investment purposes.

Today as never before the mistake of choosing the unsuited production-related machinery is admitted

The selection of the Supplier Partner is a crucial decision that can not be merely focused on the price, but must take into account other factors such as service, warranty terms, spare parts availability, reliability and financial strength, qualified staff, quick maintenance intervention and mastery of the field, Praber is capable of satisfying the aforesaid requirements and therefore ensure the expected outcome.

Praber is best expressed through its motto: "Forging the future!", a principle which enhances the company's ability to innovate, to dare and provide original, modern and competitive solutions.

# PRABER GROUP

**Praber group bases its commercial offer in three business divisions:**

**Forging presses  
Praber Service  
Atlas Elettrica**

Praber Group is specialized in:

manufacturing with its own brand of forging and screw presses, and complete systems for metal forming (brass, steel and other metal alloys);

ejectors and die lubrication systems. For very heavy loads, automations are performed by means of anthropomorphic robots;

electronic and forging press control panels as well as auxiliary equipment, hardware and software for industrial automation, vision systems and robotic cells;

electronic and pneumatic load/unload automation systems equipped with the most advanced technologies, always customized according to the needs and perfectly combinable with any type of machinery;

design as well as engineering and technical consulting, feasibility studies on both products and processes, design of auxiliary equipment and accessories for industrial process;

spare parts and manufacturing of pieces made according to a drawing;

highly qualified assistance with constantly updated expertise also covering any kind of company manufacturing metal forging plant (brass, steel and other metal alloys);

ordinary and extraordinary maintenance programs, terms of warranty extension plans, overhaul and adaptation to standards for machineries and complete automated islands;





PRABER GROUP  
FORGING THE FUTURE  
**PRABER**  
PRESSE E BILANCIERI



PRABER GROUP  
FORGING THE FUTURE  
**PRABER·SERVICE**  
ENGINEERING·FOR·INDUSTRY

PRABER GROUP  
FORGING THE FUTURE  
**ATLAS**  
ELETTRICA  
SOFTWARE&HARDWARE  
PER L'INDUSTRIA AUTOMATICA



An aerial photograph of a large industrial manufacturing facility, likely a Praber plant, showing various pieces of machinery, storage areas, and structural elements. The entire image is covered with a semi-transparent blue filter. The text is overlaid on the right side of the image.

Today Praber is a company specialized in the manufacture of forging and screw presses, control panels and customized automations, with patented and thoroughly tested solutions suitable to guarantee high-tech performance

Praber is the ideal manufacturer and partner for the supply of solutions suited to hot forging of brass, aluminum, steel and various metal alloys

Here you can quickly see the exclusive production with the comprehensive warranty of Praber trademark

Praber Group has its own office for mechanical and electrical design, with independent business functions so as to ensure increased specialization and expertise relevant to assistance and maintenance.

Praber offers complete solutions, starting from the workpiece to be manufactured Praber team is able to design the whole production line, supporting and basing the offered choices on several case histories making it an essential pre-requisite of reliability and guarantee for investment purposes.









Praber Group is a young, dynamic and ambitious, but not inexperienced company. It has been present with its own brand for twenty years and now has earned the trust of several companies leading in their relevant fields. Praber Group means that: performing the craft that you know and for which you have lavished energy, capital and commitment. Trusting in it is the basis for any new initiatives, without ever losing the humility to know your gaps and to fill them through the appropriate resources and solutions.

The company motto is “Forging the future!”, Because it well encloses the mastery of craft combined with the ambition to keep carrying it out in the future, with the awareness that tomorrow can only be accessed with adaptive capacity, through flexibility and courage to dare.



## The Founders

Favourite quote: "It is not the strongest of the species that survives, nor the most intelligent that survives. It is the one that is most adaptable to change."  
Charles Darwin

### Michele Prandelli

CEO of Praber Group, he is certainly the soul and spirit of our business, but just behind his realist and concrete style, lies his actually far-sighted, clear and ambitious vision of the group management.. He deeply loves his job but is at the same time aware that only daring and innovating we can refine the route and that success is not restricted to the achieved results, conversely it means the capability of correcting mistakes and filling gaps. He firmly believes that only through the courage of ideas today's companies can overcome the dangers and the national and international challenges.

Education and training in electronics and electrotechnology through a highly specializing path, joined to extensive experience achieved on site, provide the aforesaid manager mastery and knowledge of his own professional context.

He mainly covers the role of sales representative of the company and at the same time he deals with the financial strategy of the entire group.

Favourite quote: "Alone we can do little. Together we can do much."  
Helen Keller

### Giuliano Bertolotti

Founding partner of Praber Group, he is the real "mechanical mind" of Praber Group, we owe him the most ingenious design solutions and always enhancing the company products. Featuring almost maniacal precision, for him the perfect mechanical movement is like the sound of a symphony: all notes have positions and very precise times, only in this way you can achieve a perfect music. Such metaphor is not assumptive at all, he likes conducting the orchestra of mechanical parts from the inside, in their infinitely minute movements.

Education and training in mechanics, and mechanics applied to industrial processes through a path that he wanted to start from the basics so as to subsequently steadily strengthen the strict matching of theory and practice.

He mainly deals with important supplies, supported by his deep scrupulous and precise attitude and equally under his supervision we find the whole design, innovation and "mechanical" organization.





Praber Group believes in honest work and considers real success, only the one arising from it. Such principle is fully put into practice within our business, and anyone working, cooperating, or providing consulting service to the Group has to share this latter.

Compliance with the commitments, proper financial and management planning and not the least respect for all the resources that are part and are linked to the group are the founding criteria of Praber brand.

Profit must also take into account the social and sustainable aspect of the same, Praber Group firmly believes that compliance with the rules is an integral part of business. Hence the reliability required by Praber from all human resources also includes intrinsic aspects making the brand even more worthy and distinctive.

“Forging the future!”, in a motto the clear vision and inspiration of each single action of the Group.

Our mission is to meet the demand of high quality machineries and systems for forging or hot forming of parts and details in brass, steel and other metal alloys.

Thanks to our innovative products, attention to the sales and after-sales service, qualified personnel and our ability to understand the productive industrial processes we are the manufacturer and supplier of comprehensive solutions for forging industries.

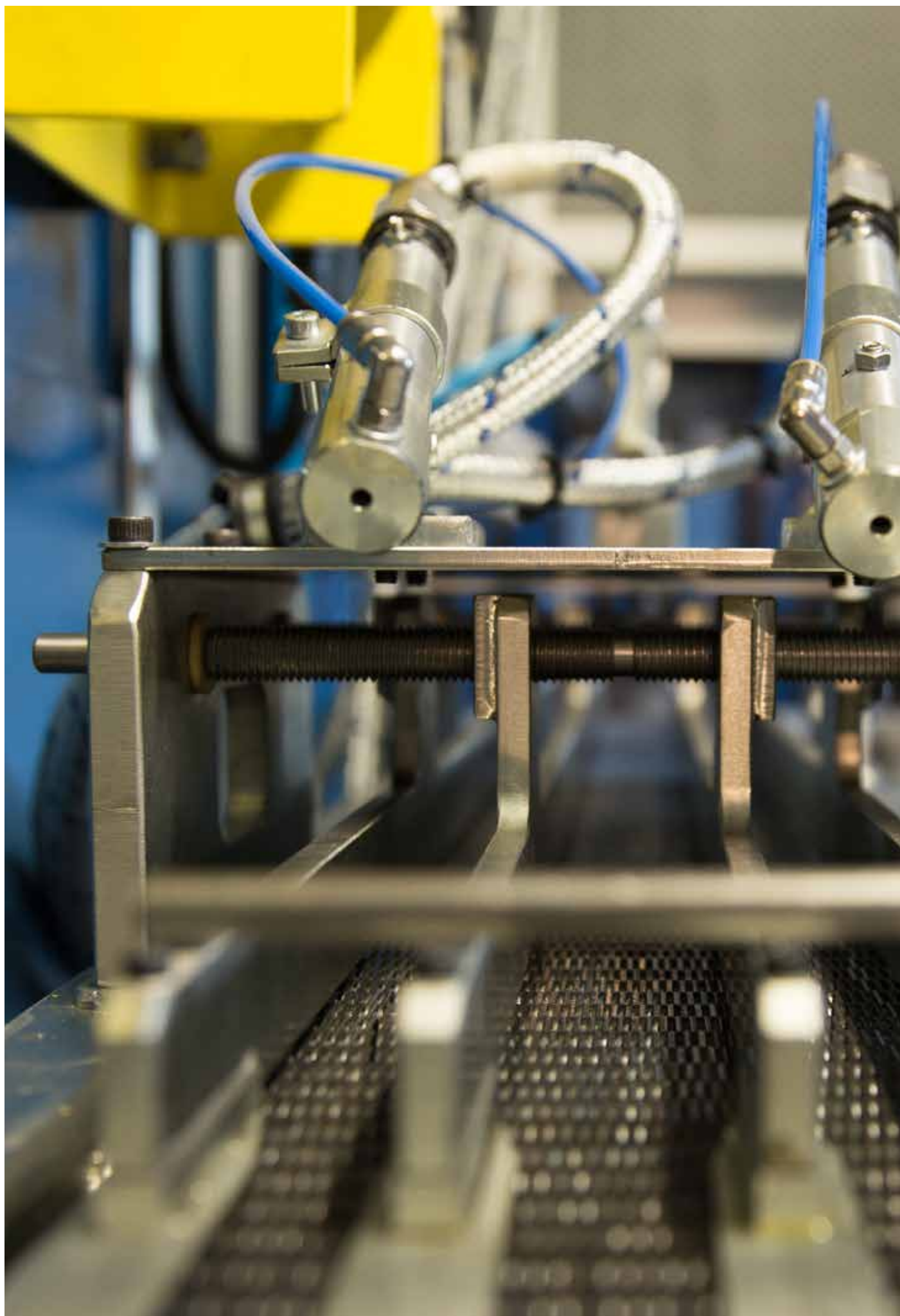
Our working method “Adapt – Innovate – Solve” makes our offer unique and competitive. We are convinced that the offers have to get “adapted - innovated – suitable to solve” in the perspective of Customer benefit and not vice versa.



We are manufacturers and therefore we are capable of ruling the whole design that is a guarantee for effective solutions, targeted to the profit of our Customers.

### Adapting Innovating Solving

It is a working method, not just a slogan. Praber Group is convinced that manufacture needs actually rule the process then they have to adapt the whole workflow, given that solutions, machineries, commercial offers by Praber have to meet any requirement in an innovative and functional manner.





# PRABER Presses

<b>PF</b>	Single stroke direct forging presses
<b>PRF</b>	Single stroke gear driven forging presses
<b>PRF CS</b>	Single stroke-continuous cycle single gear reduction forging presses
<b>PRF CS 2R</b>	Single stroke-continuous cycle double gear reduction presses

PF	PRF	PRF CS	PRF CS 2R
Single stroke direct forging press	Single stroke single gear reduction forging presses	Single stroke-continuous cycle single gear reduction forging presses	Single stroke-continuous cycle double gear reduction presses
2500	2500 Big Foot	2500	
3500	3200 Big Foot	3200	
4500 Big Bang	3600 Big Foot	3600	
	4000 Big Foot	4000	4000 Big Foot
	4500 Big Mama		
	5500 Big Mama		
	5500L Big Mama	5500L Big Mama	5500L Big Mama
	8000L Big One		

## Eccentric Presses

Hot forging single stroke PF series “Big Bang” Praber Presses for ferrous and non –ferrous metals. Authentic high stiffness and speed single stroke hot forging press for ferrous and non –ferrous metals.

Series PF “Big Bang” Praber presses have been specifically designed, planned and manufactured for all stages of hot processing: deformation of billets, trimming and finishing of forged parts.

Equipped with two uprights and a thrust point Series PF “Big Bang” Praber presses are characterized by several plus: minimum dimensions, highest functionality and simplicity of use, as well as low maintenance costs and fuel consumption.

The high technological level of the machinery manufacture, the arrangement of its kinematic multi-linked parts and the significant length of the slide rails, allow the press to withstand heavy loads and work rates.

The design is performed using the most advanced dedicated software and it allows a very high level of customization of the machinery, supplemented in the end with innovative technological solutions by means of interlocks and accessories required by the different processing needs..

Any solution in the field of eccentric machineries is available, being able to benefit from every thrust, size, stroke and speed, the customer will find within Praber product range the optimal solution for every forging problem.

Field of application:

Alloys hot forging

Brass hot forging: taps and fittings, boiler or hydraulic components in general

Light alloys hot forging (components for cars and motorcycles, shipbuilding, aerospace, watch industry, etc..)

Steel hot forging (components for valves, screws, joints, rods, flanges etc.)





Description		PRABER PF 2500	PRABER PF 3500	PRABER PF 4500
Nominal force	kN	2500	3500	4500
Strokes per minute	N.	120	100	95
Slide stroke length	mm	200	200	200
Slider setting	mm	50	90	100
Vertical gap	mm	390	420	450
Vertical gap between uprights	mm	600	700	867
Cushion Capacity	kN	200	300	500
Adjustable cushion stroke length	mm	50	70	70
Main engine power	kW	15	18	22
Press indicative weight	Kg	12.700	22.000	28.650

# PRABER Series PRF Presses



PRF series high stiffness presses line for single stroke hot forging and drilling of ferrous and non-ferrous metals.

Description		2500	3200	3600	4000	4500	5500	5500L	7000
Capacity	KN	2500	3200	3600	4.000	4.500	5.500	5.500	7000
Continuous cycle-strokes per minute		22-40	22-40	20-35	16-30	16-30	16-30	16-30	16-30
Single stroke-strokes per minute		22-40	22-40	20-35	16-30	16-30	16-30	16-30	16-25
Cycle		Single	Single	Single	Single	Single	Single	Single	Single
Slide stroke length	mm	300	320	380	400	450	500	500	500
Vertical gap between uprights	mm	800	900	1000	1200	1400	1500	1600	1600
Distance between the planes	mm	605	605	605	725 mm	1000	1100	1100	1100
Motorized slider setting	mm	100	100	100	100	125	150	150	150
Hydraulic cushion with upper outlet	KN	500	500	500	700	1000	1000	1000	1200
Cushion stroke –automatic setting	mm	35-90	35-90	35-90	35-100	35-130	35-200	35-200	35-200
AC adjustable speed inverter-fed main engine	KW	30	37	37	45	55	75	75	75
Slider setting by means of hydraulic engine		si	si	si	si	si	si	si	si
Die shoe dimension	mm	950 x 950	950 x 950	950 x 950	1110 x 1150	1350 x 1350	1400 x 1500	1580 x 1500	1580 x 1500
Slide lower plane dimension	mm	700 x 720	700 x 720	700 x 720	700 x 720	950 x 950	1300 x 1000	1300 x 1000	1300 x 1000



## PRABER Series PRF-CS Presses



PRF-CS high stiffness presses line for single stroke and continuous cycle hot forging of ferrous and non-ferrous metals.

Description		2500	3200	3600	4000	4500	5500	5500L	7000
Capacity	KN	2500	3200	3600	4.000	4.500	5.500	5.500	7000
Continuous cycle-strokes per minute		22-40	22-40	20-35	16-30	16-30	16-30	16-30	16-30
Single stroke-strokes per minute		22-40	22-40	20-35	16-30	16-30	16-30	16-30	16-25
Cycle		Single/ Continuous	Single/ Continuous	Single/ Continuous	Single/ Continuous	Single/ Continuous	Single/ Continuous	Single/ Continuous	Single/ Continuous
Slide stroke length	mm	300	320	380	400	450	500	500	500
Vertical gap between uprights	mm	800	900	1000	1200	1400	1500	1600	1600
Distance between the planes	mm	605	605	605	725	1000	1100	1100	1100
Motorized slider setting	mm	100	100	100	100	125	150	150	150
Hydraulic cushion with upper outlet	KN	500	500	500	700	1000	1000	1000	1200
Cushion stroke – automatic setting	mm	35-90	35-90	35-90	35-100	35-130	35-200	35-200	35-200
AC adjustable speed inverter-fed main engine	KW	30	37	37	45	55	75	75	75
Slider setting by means of hydraulic engine		yes	yes	yes	yes	yes	yes	yes	yes
Die shoe dimension	mm	950 x 950	950 x 950	950 x 950	1110 x 1150	1350 x 1350	1400 x 1500	1580 x 1500	1580 x 1500
Slide lower plane dimension	mm	700 x 720	700 x 720	700 x 720	700 x 720	950 x 950	1300 x 1000	1300 x 1000	1300 x 1000



## Screw presses

Praber drive screw presses series suitable for hot forging of complex workpieces or requiring a multiple forming steps. The compressive strength is achieved through the transformation into forming work of kinetic energy by means of flywheel accumulation.

Fields of application:

Hot forging

Cold forging of steel and alloys (cutlery, silverware, pots, etc.)

Minting (plates, medals, etc.)

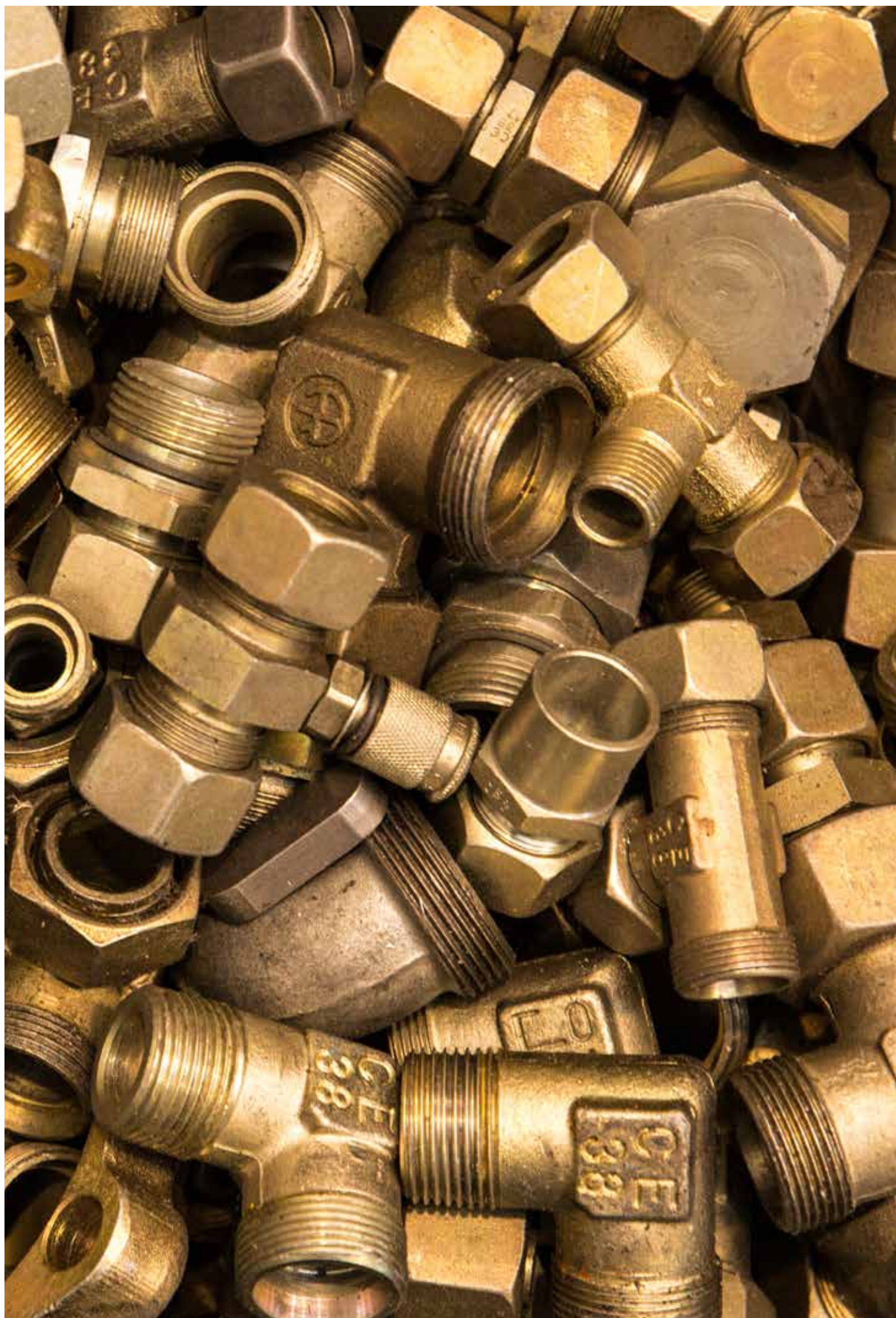
Brass hot forging: taps and fittings, boiler or hydraulic components in general

Light alloys hot forging (components for cars and motorcycles, shipbuilding, aerospace, watch industry, etc.)

Steel hot forging (components for valves, screws, joints, rods, flanges etc.)

Paper industry processing (paper lace manufacturing, etc.)















**PRABER GROUP**

Via Giorgio La Pira, 29 - 25021 Bagnolo Mella (BS)  
Tel. +39 030.6822031 - Fax+39 030.6824864  
Email: [info@praber.it](mailto:info@praber.it) - Pec: [praber@pec.it](mailto:praber@pec.it)  
[www.prabergroup.com](http://www.prabergroup.com)